



GLOBAL AID

Ability in Disability



Annual Report 2013-14

In the financial year 2013-14 , Global AID has conducted and felicitated the following activities.

Highlights for the 2012-2013 Academic

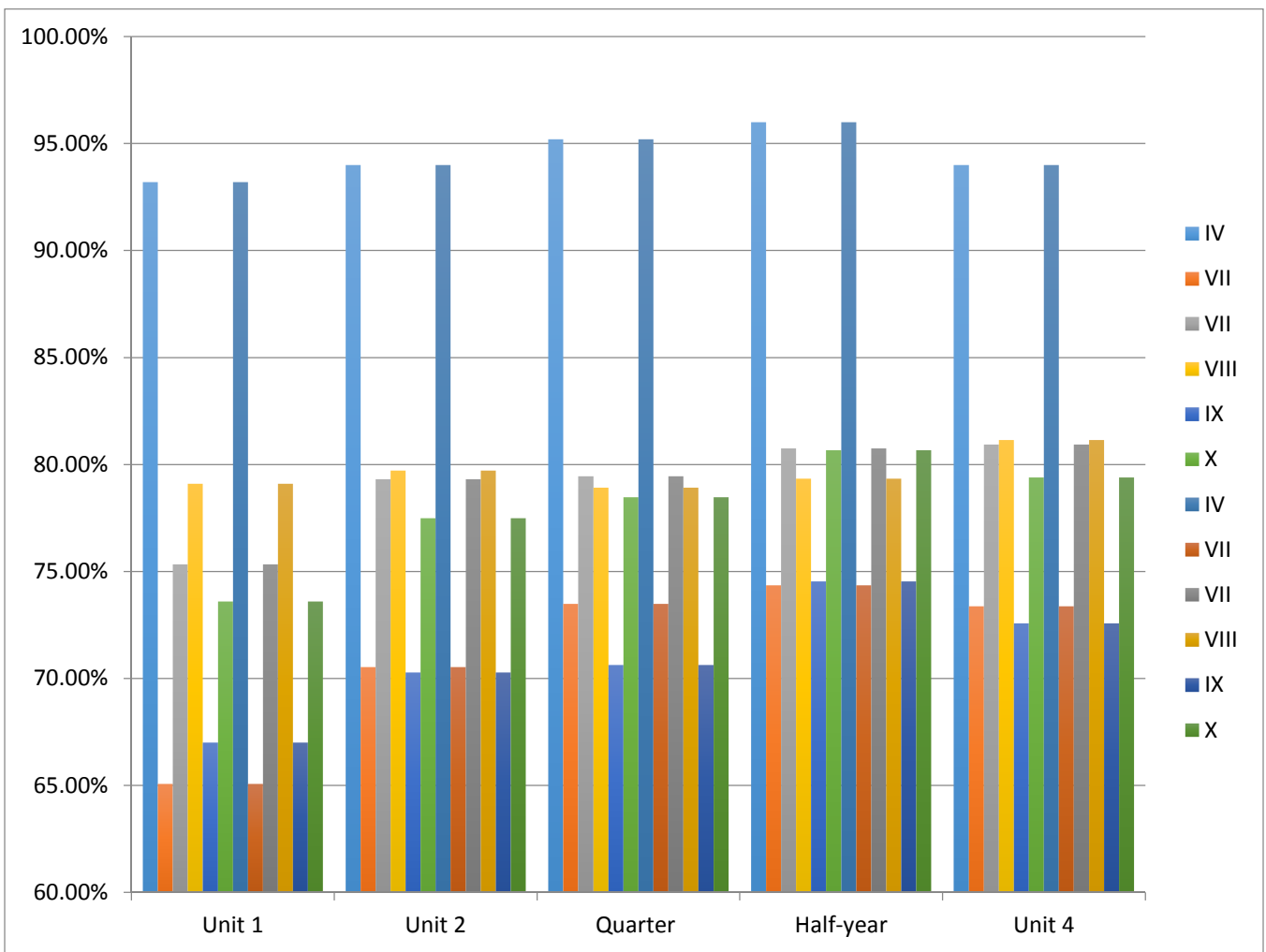
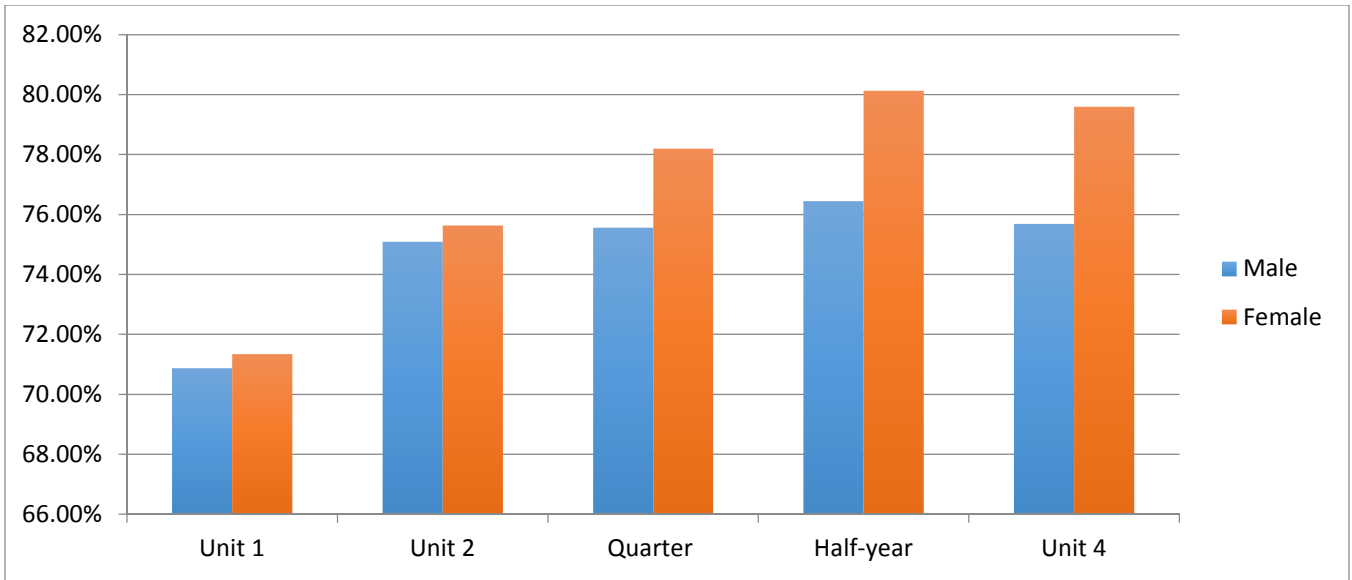
- Increased in the number of girls in our hostel from 15 to 22.
- Managed the food inflation effectively
- Integrated ten hamlet children into our hostel.
- Documentation of reduction in malnutrition rate.
- Improvement in marks by 7% through academic cycle.
- Mitigated for food inflation through bulk buying and sourcing directly from farmers.

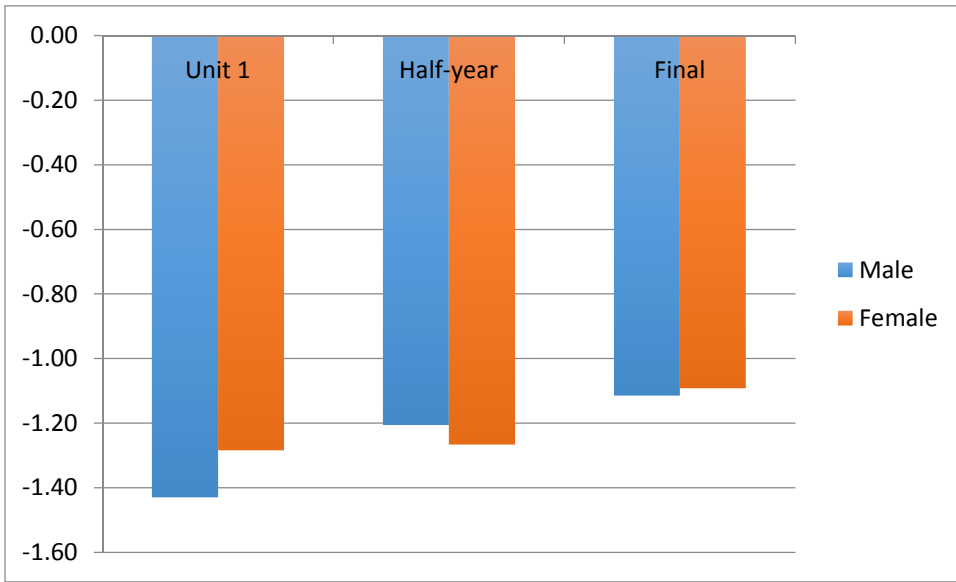
Highlights for 2013-2014 Academic

- Increased the number of children to 50
- Increase the ratio of girls to over 50% or 25+ girls.
- Improve English through DVD programs
- Hire a female hostel supervisor
- Hire a female attendant
- Tracking of children with our hostel and as they move beyond.
- Encouraging/empowering our ground staff to make decisions.
- Cross-functional training.
- Supervision & development
- Reverse flow of knowledge to hamlets

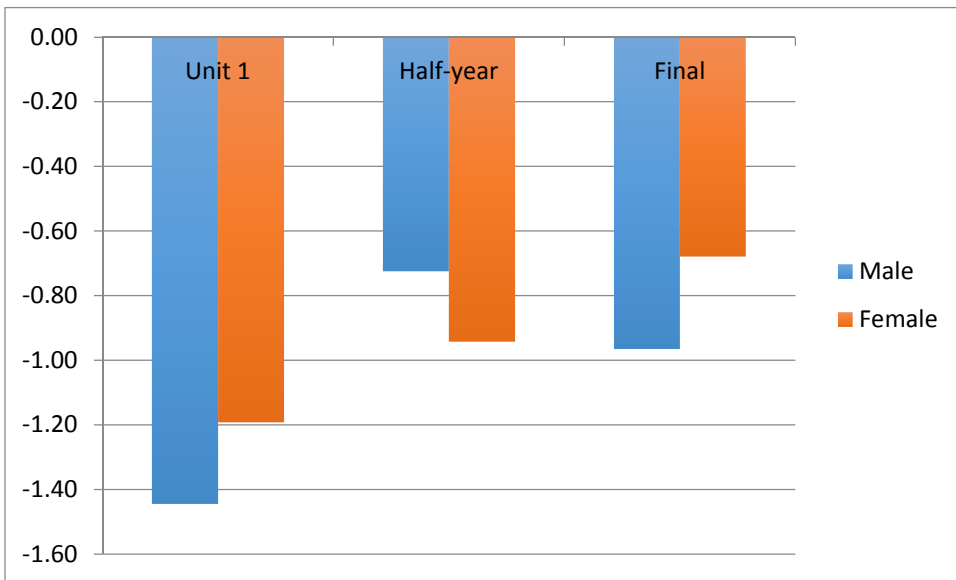
Mitigating for difficulties/risks

- Turnover of female attendants – higher salary and hiring of female supervisor.
- Salary inflation
- Limited physical capacity.
- Variability in 10th standard marks





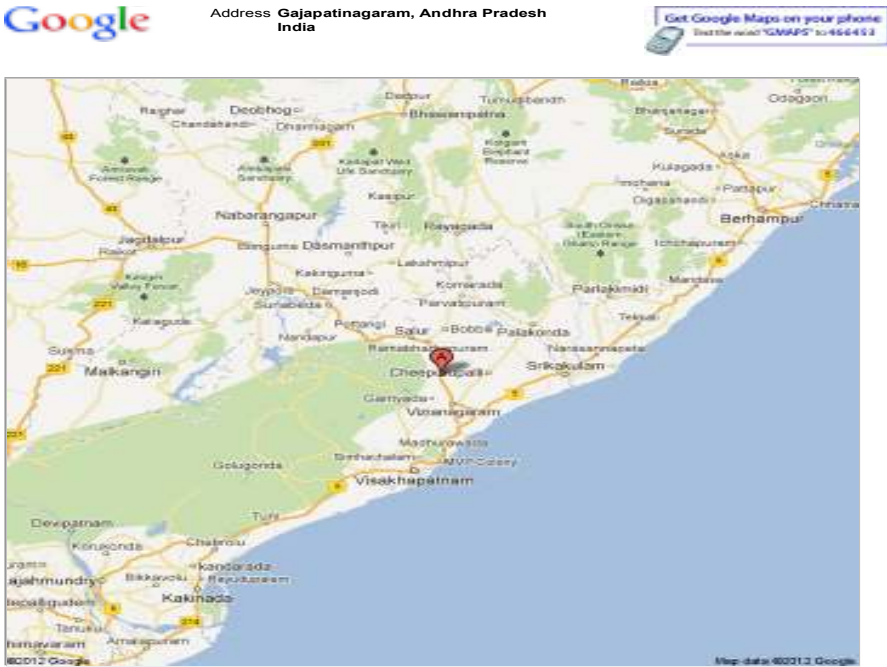
Malnutrition:
Z score on
height



Malnutrition:
Z score on BMI

Understanding the **ground conditions**: The center hub of our network of is the hostel/orphanage in Gajapathinagaram, Vigaynagaram District of AP, within the tribal belt.

Gajapatinagaram, Vizianagaram, Andhra Pradesh, India - Google... http://maps.google.com/maps?f=q&source=s_q&hl=en&q=Gaj...



Inputs: Beyond the financial contributions, which support all the direct and some indirect expenses there are a number of actors that ensure that this system network is effective.

Funding A majority of the funding is through US based supporters and entities. We have now started receiving some funding from Indian corporates and Indians locally.

Volunteers

US - Writing reports, fund raising, helping develop best practices, research, branding and communications

Global AID- Monitoring operations, writing reports, fund raising, branding and communications, procurement of supplies (e.g. clothes), Volunteer mobilization from colleges, department of social work and international student community associated with Andhra University

LFWPT- Provides access to the hostel facility and pays for the general up keep of the building. In addition, LFWPT provides supporting human resources including accounting and auditing services.

Local entities

Use of hub – The hostel/orphanage serves as an important center point to management the network of schools and a place for our teachers to be trained and learn from each other. This hostel will serve as an important link in educating the hamlet children as they graduate from our hamlet schools and reach secondary education. We hope our children will then go onto college. Further, being a physical structure and meeting point it serves as a formal and informal communication hub too. Information flows between the hamlets through the hub hostel.

Dedicated/quality field staff. Underpinning this effort is our field staff. Raju Golla was hired through a systematic process. He was selected among two-dozen applicants and comes with the proper academic credentials and experience. Beyond his vita, he holds values that our dear to our organization – a dedication to the children we serve. Manesh is helps manage the hostel operations including procuring supplies in bulk and from the villagers themselves.

Government Resources. Our children go to the local school. We have a good working relationship with the school. Our children are able to tap the mid-day meal program offered at the school reducing our food expenses.

Process: *Selection process:* The selection process is complex. We are very strict in ensuring that the children in our care are truly vulnerable. Some of the children are orphans (parents died of AIDs), while other are coming from extreme poverty. A majority of the children are classified as Backward caste or tribal. The average family income is about 10,000 rupees a year and is insufficient to pay for sufficient food. As such most of the children coming to our hostel are severely malnourished as defined by WHO standards. Given our stellar academic performance and reputation we have built up there is a long waiting list. As such we are able to select the children with the greatest potential. In addition, this academic year we had 10 children from our hamlet program. We plan to expand this further.

Operations: We ensure a rich and health diet. Medical treatments (including deworming) is conducted by LFWPT. The operation is spartan in nature and we focus on rigor and basics. The children study approximately 12 hours a day, which includes school time. The children are expected to support each other. The older

children are also expected to be mentors and serve as role models.

Output/Outcomes: From our fourth year of operation, it is obvious that we are really having an impact. Direct effect can be measure by the number of students attending our program (see Table 1). This year we educated and cared for 48 children of which 22 were girls. We can assess the efficacy of our intervention by their educational achievement and basic health statistics (see Table 2).

The operations are running efficiently. Our unit cost to care for one child this last academic year was about 330\$. The cost per child was below our projections given our diligent procurement process and the weakening of the rupee from 43 rupees to 56 rupees/\$ (Figure 1 displays the distribution of expenses by category).

We have benchmarked our operations with other entities in India and elsewhere. Our cost structure is lower than most NGOs. Many hostel's unit cost per child ranges from 600 to 1500\$/child/year.

